

ORDINANCE NO: 2021-05
CITY OF COTTER, ARKANSAS

BE IT ENACTED BY THE CITY COUNCIL OF COTTER, ARKANSAS AN ORDINANCE AMENDING ORDINANCE 1997-07, BY REDEFINING THE BOUNDARIES OF THE EXISTING THREE WARDS BASED ON THE 2020 CENSUS.

WHEREAS, In accordance with Arkansas Law 14-44-102. Redistricting of wards, the City Council of the City of Cotter, State of Arkansas does hereby amend the ward boundaries contained in this report. Each section includes population and demographic figures associated with the ward that is described based upon the data contained in the U.S. Public Law 94-171* from the United State Census Bureau for Census of Population of 2020.

WHEREAS, Section 19-113, Arkansas Statutes provides that all Cities of the Second Class shall be formed into Wards, and the population distribution of the City of Cotter has changed so that the Wards no longer contain equal number of electors.

WHEREAS, Each row of the report lists the unique numeric identification code assigned by the U.S. Census Bureau for the geographic unit contained therein. These unique areas represent Counties, Voting Tabulation Districts, and blocks that together compose the geographic territory of the ward. This listing serves as the written legal description of the Wards in the City of Cotter.

NOW THEREFORE, BE IT ORDAINED BY THE CITY COUNCIL OF THE CITY OF COTTER, ARKANSAS:

SECTION 1: Ordinance includes letter From Jennifer Wheeler, Sr. GIS Analyst with Arkansas Department of Transformation and Shared Services, dated December 1, 2021, explaining the allocation method to split a portion of Block 0500595002001 and its population allocated from Ward 2 into Ward 3. See attached letter dated December 1, 2021, and Census Block Report.

SECTION 2: The BOUNDARIES of the three Wards of said city shall be as follows pursuant to attached Exhibits 1, 2, 3 and 4:

ORIGINAL

Exhibit 1 - City of Cotter Map and Population Total of 886 for Wards No: 1, 2, and 3.

Exhibit 2 - Ward 1 Map and Population Total of 298.

Exhibit 3 - Ward 2 Map and Population Total of 287.

Exhibit 4 - Ward 3 Map and Population Total of 301.

SECTION 3: All ordinances and parts of ordinances in conflict herewith are hereby repealed.

SECTION 4: The enactment of this ordinance being necessary so the next election can be held in accordance with State statutes, and for the public peace and welfare, an emergency is hereby declared to exist, and this ordinance shall be in full force and effect from and after its passage.

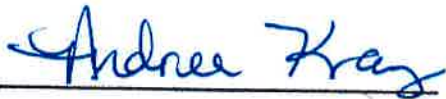
Adopted this 16th day of December 2021 by City Council of Cotter, Arkansas

APPROVED: _____



McGeorge Caradine, Mayor

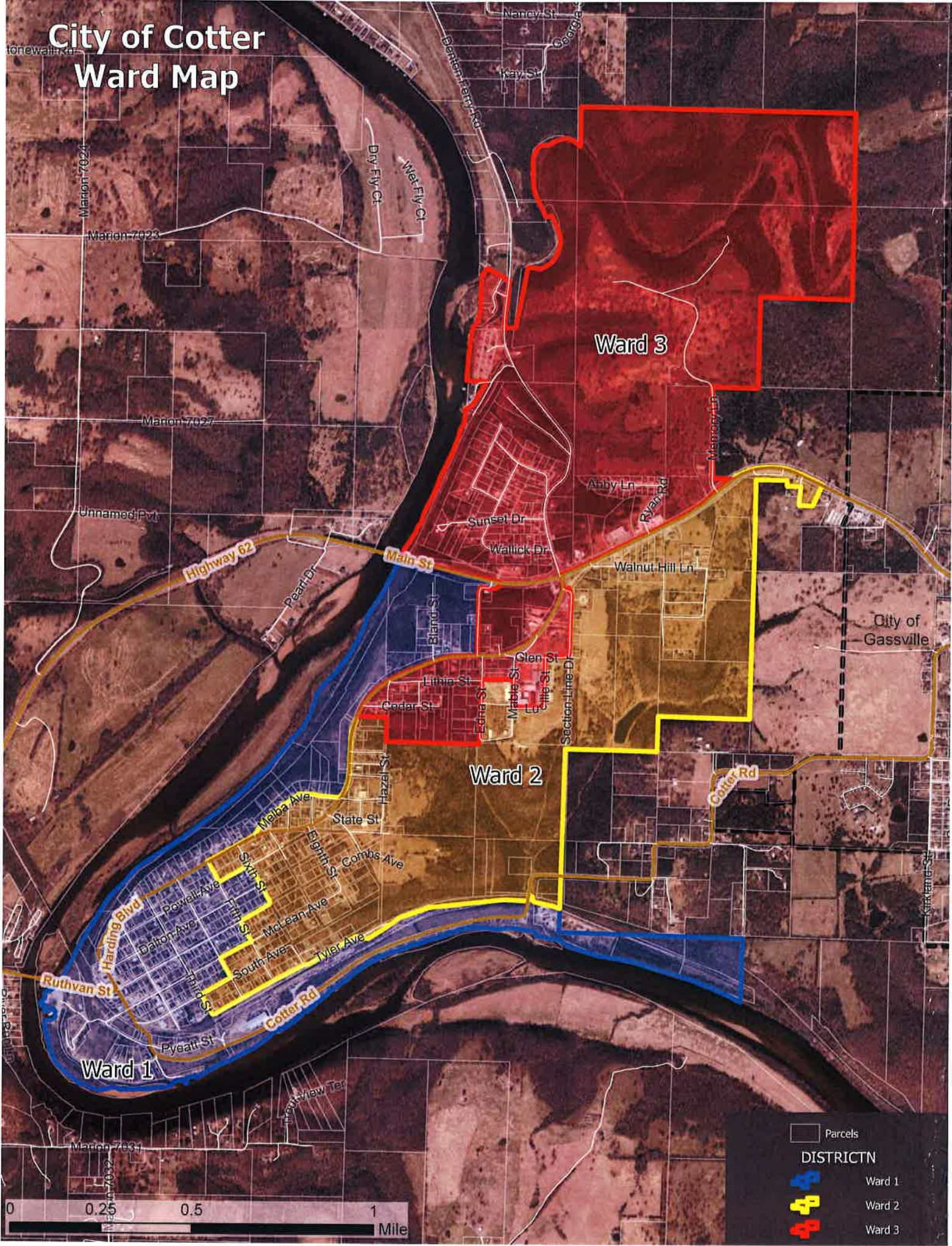
ATTEST: _____



Andrea Kray, Recorder/Treasurer

ORIGINAL

City of Cotter Ward Map





Department of Transformation and Shared Services

Governor Asa Hutchinson
Secretary Amy Fecher
Director Shelby Johnson

December 1, 2021

Honorable Mayor Mac Caradine
PO Box 9
Cotter, AR 72626

RE: Allocation Method to Split Block 050059509002001

Mayor Caradine,

The Arkansas Geographic Information Systems (GIS) Office is pleased to provide the following report documenting the results and procedures used to estimate the population of Census Block 050059509002001 as manually split according to your request.

Because the boundary for block 050059509002001 does not conform to the desired overall ward boundaries, and because redistricting software does not allow the splitting of blocks, the Arkansas GIS Office was asked to prepare a new map and estimate the population for the split block.

Overview

- The total population reported by the US Census Bureau for Block 050059509002001 is 107 persons.
- The estimated population within the split area is 12 persons.

Method

The estimate contained in this report is informed by the 2020 Decennial Census SF1 block file released on August 12, 2021; physical address data provided by the Baxter County 911 Addressing authority (last updated in November 2020); and the proposed wards provided by your office on November 23, 2021.

The method used to perform this allocation utilizes the number of residential address points from Baxter County 911 compared to the total population for the block. The number of residential addresses was counted in the full block (54). Then, the number of addresses was counted in the split block (6). These values were used to calculate the percentage of addresses inside the split portion of the block. That percentage was then used as the variable to estimate the population for the split block using the original Census population totals.

Results

Step 1) Addresses inside the split block/addresses inside the whole block = Percent of addresses inside the split block ($6/54 = 11.11\%$).

Step 2) Percent of addresses inside split block * total Census block population = Estimated population in split block ($0.11*107 = 12$ persons)

Sincerely,

A handwritten signature in black ink, appearing to read 'JW', is centered on the page.

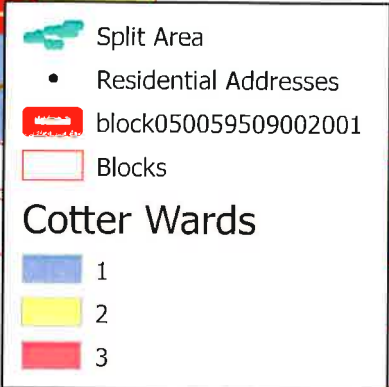
Jennifer Wheeler
Sr. GIS Analyst

Attachments: Allocation table, map

Location of split block

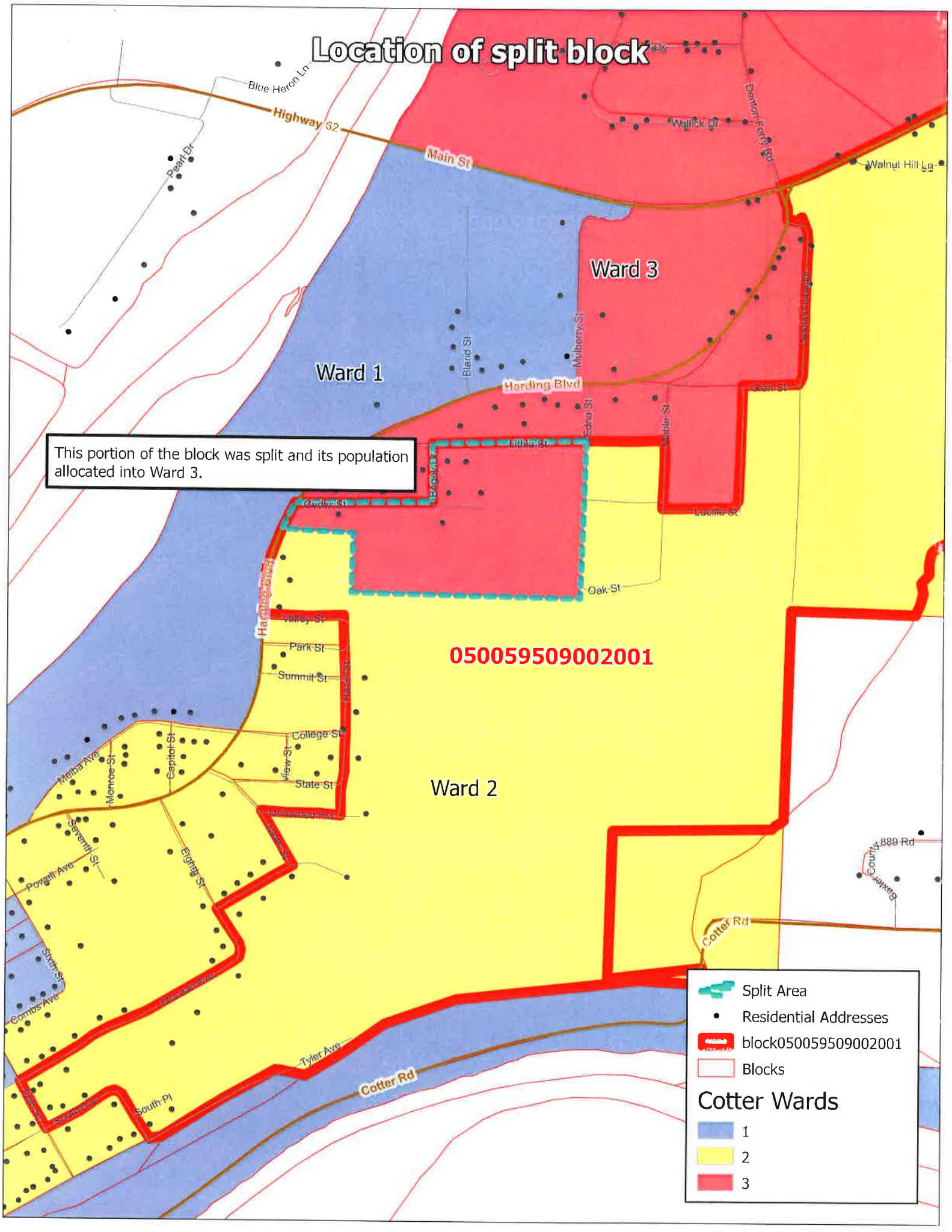
This portion of the block was split and its population allocated into Ward 3.

050059509002001



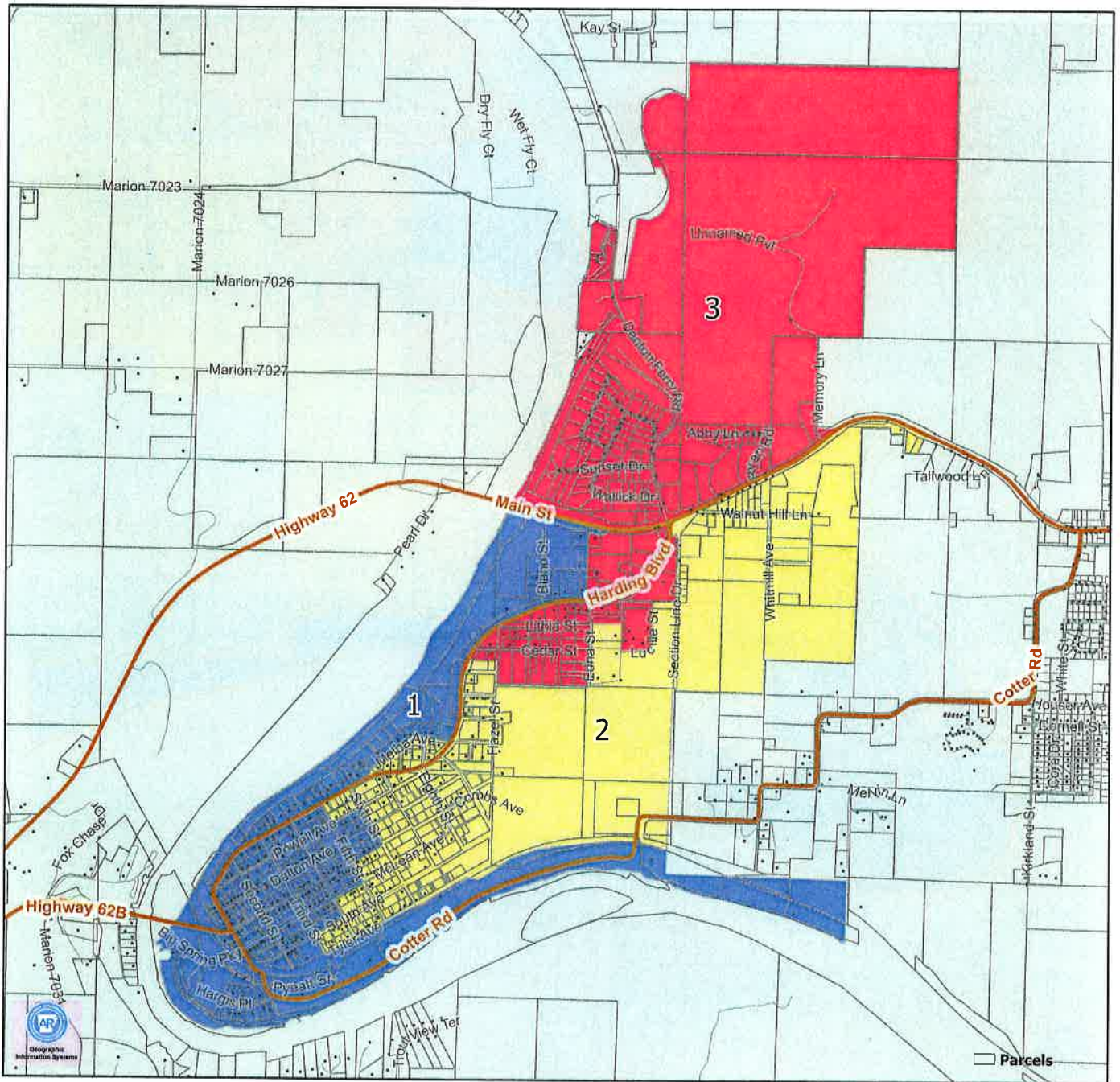
Cotter Wards

- 1
- 2
- 3



geoid10	place	2020 Block Population	Residential Addresses in Full Block	Residential Addresses in Split Block	% Residential Addresses Inside Split Block	Population to Reallocate to from Ward 2 to Ward 3
050059509002001	15490	107	54	6	11%	12

Exhibit 1 - City of Cotter Wards



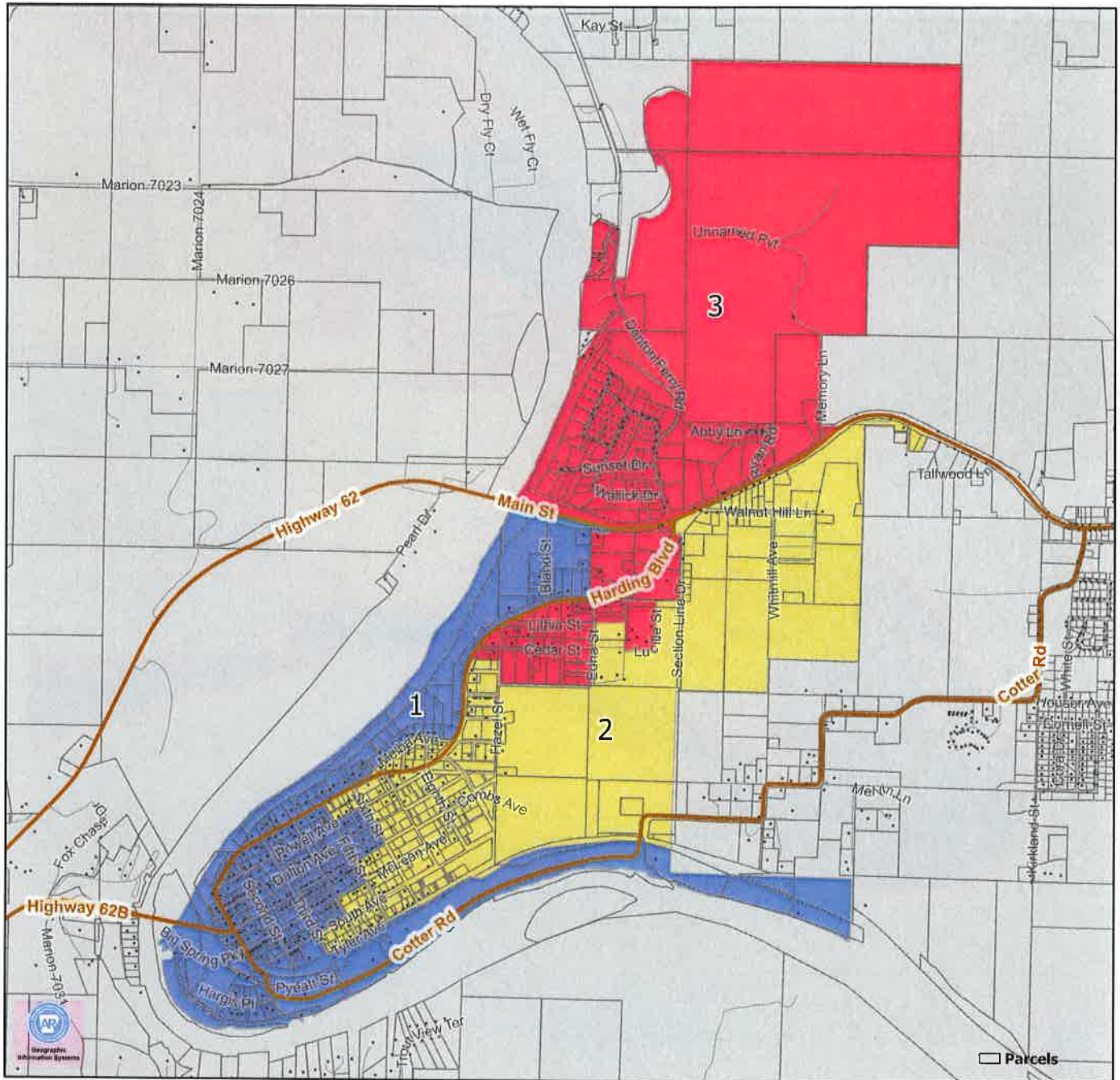
Total Population Tabulation

Ward	All Persons	Target	Dev.	Difference
1	298	295	0.90%	✓
2	287	295	-2.82%	✓
3	301	295	1.92%	✓
Assigned	886			
Total Pop	886			
Unassigned	0			

Racial Demographics as a Percent of Total Population

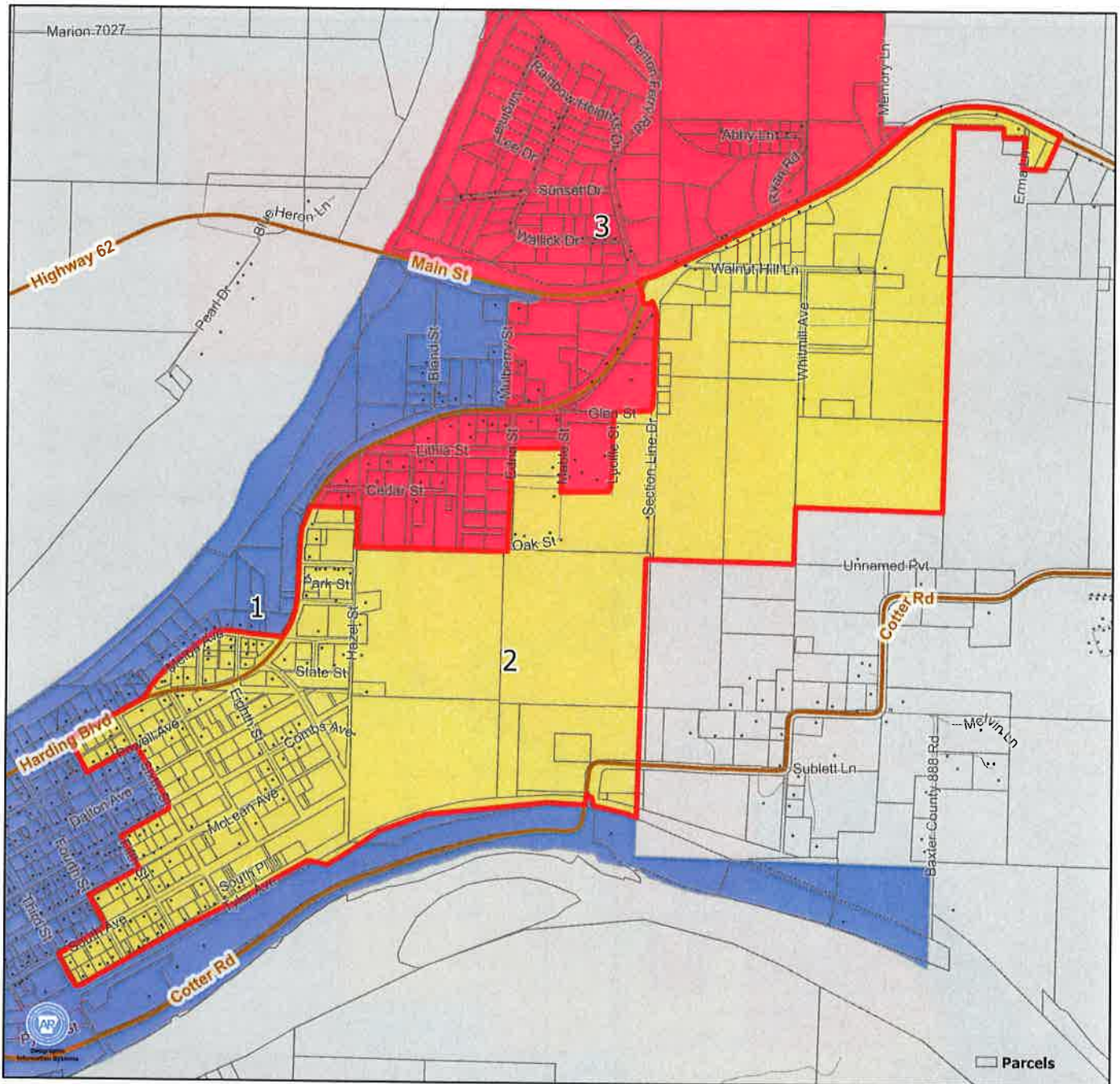
	White	Black	Hispanic	Minority
1	82.21%	0.34%	3.36%	17.79%
2	97.56%	0.00%	3.14%	2.44%
3	88.70%	0.00%	1.00%	11.30%

Exhibit 1 - City of Cotter Wards



Ward	Total Population Tabulation				Racial Demographics as a Percent of Total Population			
	All Persons	Target	Dev.	Difference	White	Black	Hispanic	Minority
1	298	295	0.90%✓	3	82.21%	0.34%	3.36%	17.79%
2	287	295	-2.82%✓	-8	97.56%	0.00%	3.14%	2.44%
3	301	295	1.92%✓	6	88.70%	0.00%	1.00%	11.30%
Assigned	886							
Total Pop	886							
Unassigned	0							

Exhibit 3 - Ward 2



Ward	Total Population Tabulation				Racial Demographics as a Percent of Total Population			
	All Persons	Target	Dev.	Difference	White	Black	Hispanic	Minority
1	298	295	0.90%✓	3	82.21%	0.34%	3.36%	17.79%
2	287	295	-2.82%✓	-8	97.56%	0.00%	3.14%	2.44%
3	301	295	1.92%✓	6	88.70%	0.00%	1.00%	11.30%
Assigned	886							
Total Pop	886							
Unassigned	0							

Census Block Report

For Ward: 1 Population: 298 Ideal: 295 Deviation: 0.90 %

Geography Layer: Blocks

Ward: 1

In Baxter County

Feature Name	Geoid	Total Persons	Voting Age	White	Black	Hispanic	Asian	American Indian	Hawaiian Pacific Islander
Block 2019	050059509002019	22	14	19	0	0	0	0	0
Block 2022	050059509002022	47	42	43	0	0	0	4	0
Block 2023	050059509002023	13	6	11	0	2	0	0	0
Block 2024	050059509002024	7	2	5	0	0	0	0	0
Block 2026	050059509002026	7	7	7	0	0	0	0	0
Block 2028	050059509002028	2	2	2	0	0	0	0	0
Block 2030	050059509002030	0	0	0	0	0	0	0	0
Block 2031	050059509002031	2	2	2	0	0	0	0	0
Block 2042	050059509002042	10	10	10	0	0	0	0	0
Block 2043	050059509002043	6	4	5	0	0	0	0	0
Block 2044	050059509002044	0	0	0	0	0	0	0	0
Block 2045	050059509002045	0	0	0	0	0	0	0	0
Block 2046	050059509002046	0	0	0	0	0	0	0	0
Block 2047	050059509002047	1	1	1	0	0	0	0	0
Block 2048	050059509002048	0	0	0	0	0	0	0	0
Block 2049	050059509002049	10	5	5	0	2	0	0	0
Block 2050	050059509002050	7	4	4	0	0	0	0	0
Block 2051	050059509002051	4	4	4	0	0	0	0	0
Block 2052	050059509002052	7	5	7	0	0	0	0	0
Block 2053	050059509002053	9	9	9	0	0	0	0	0
Block 2054	050059509002054	8	7	3	0	2	0	0	0
Block 2055	050059509002055	2	2	2	0	0	0	0	0
Block 2056	050059509002056	0	0	0	0	0	0	0	0
Block 2057	050059509002057	15	15	9	0	0	0	0	0
Block 2059	050059509002059	4	3	4	0	0	0	0	0
Block 2060	050059509002060	10	8	8	0	0	0	0	0
Block 2061	050059509002061	17	12	15	1	1	0	1	0
Block 2062	050059509002062	12	10	6	0	2	0	0	0
Block 2063	050059509002063	13	8	12	0	0	0	0	0
Block 2064	050059509002064	24	17	24	0	0	0	0	0
Block 2065	050059509002065	9	9	7	0	0	0	2	0
Block 2066	050059509002066	10	9	8	0	0	0	0	0
Block 2067	050059509002067	2	2	0	0	0	0	0	0
Block 2068	050059509002068	9	8	8	0	1	0	0	0
Block 2069	050059509002069	9	5	5	0	0	0	0	0
Block 3047	050059509003047	0	0	0	0	0	0	0	0
Block 3057	050059509003057	0	0	0	0	0	0	0	0

Census Block Report

For Ward: 2 Population: 287 Ideal: 295 Deviation: -2.82 %

Geography Layer: Blocks Ward: 2
In Baxter County

Feature Name	Geoid	Total Persons	Voting Age	White	Black	Hispanic	Asian	American Indian	Hawaiian Pacific Islander
Block 2001	*050059509002001	*95	95	*95	0	0	0	0	0
Block 2003	050059509002003	14	11	13	0	0	0	0	0
Block 2005	050059509002005	10	8	10	0	0	0	0	0
Block 2008	050059509002008	0	0	0	0	0	0	0	0
Block 2013	050059509002013	0	0	0	0	0	0	0	0
Block 2014	050059509002014	16	16	14	0	1	1	0	0
Block 2015	050059509002015	0	0	0	0	0	0	0	0
Block 2016	050059509002016	0	0	0	0	0	0	0	0
Block 2018	050059509002018	21	18	16	0	0	0	0	0
Block 2020	050059509002020	43	43	41	0	4	0	0	0
Block 2021	050059509002021	17	13	17	0	0	0	0	0
Block 2025	050059509002025	13	8	10	0	0	0	0	0
Block 2027	050059509002027	1	1	1	0	0	0	0	0
Block 2029	050059509002029	11	10	9	0	3	0	0	0
Block 2032	050059509002032	3	3	3	0	0	0	0	0
Block 2058	050059509002058	1	1	1	0	0	0	0	0
Block 2070	050059509002070	18	15	16	0	0	0	0	0
Block 2071	050059509002071	8	8	7	0	0	0	1	0
Block 2072	050059509002072	6	4	6	0	0	0	0	0
Block 2073	050059509002073	10	6	9	0	1	0	0	0
Block 3045	050059509003045	0	0	0	0	0	0	0	0

* Block 050059509002001 was manually split to move 12 persons from Ward 2 to Ward 3. Original population for block 2001 is 107.

Feature Name	Geoid	Total Persons	Voting Age	White	Black	Hispanic	Asian	American Indian	Hawaiian Pacific Islander
Block 2006	050059509002006	0	0	0	0	0	0	0	0
Block 3049	050059509003049	0	0	0	0	0	0	0	0
Block 3050	050059509003050	0	0	0	0	0	0	0	0

For Ward: 3 Population: 301 Ideal: 295 Deviation: 1.92%

Geography Layer: Blocks Ward: 3
In Baxter County

Feature Name	Geoid	Total Persons	Voting Age	White	Black	Hispanic	Asian	American Indian	Hawaiian Pacific Islander
Block 2002	050059509002002	13	9	13	0	0	0	0	0
Block 2004	050059509002004	17	16	12	0	1	0	0	0
Block 2009	050059509002009	20	13	19	0	0	1	0	0
Block 2010	050059509002010	6	6	6	0	0	0	0	0

Census Block Report

Geography Layer: Blocks
In Baxter County

Ward: 3

Feature Name	Geoid	Total Persons	Voting Age	White	Black	Hispanic	Asian	American Indian	Hawaiian Pacific Islander
Block 2011	050059509002011	0	0	0	0	0	0	0	0
Block 2012	050059509002012	60	53	58	0	1	2	0	0
Block 2017	050059509002017	9	8	6	0	1	0	0	0
Block 2033	050059509002033	56	44	53	0	0	0	0	0
Block 2034	050059509002034	17	13	15	0	0	0	0	0
Block 2035	050059509002035	29	20	27	0	0	0	0	0
Block 2036	050059509002036	21	21	21	0	0	0	0	0
Block 3014	050059509003014	36	33	35	0	0	0	0	0
Block 3015	050059509003015	5	3	2	0	0	0	0	0
Block 3016	050059509003016	0	0	0	0	0	0	0	0
Block 4034	050059509004034	0	0	0	0	0	0	0	0
Block 2001	* 050059509002001	*12							

* Block 050059509002001 was manually split to move 12 persons from Ward 2 to Ward 3.